

Petty's Island Preserve

Pennsauken, NJ



New Jersey
NATURAL LANDS TRUST

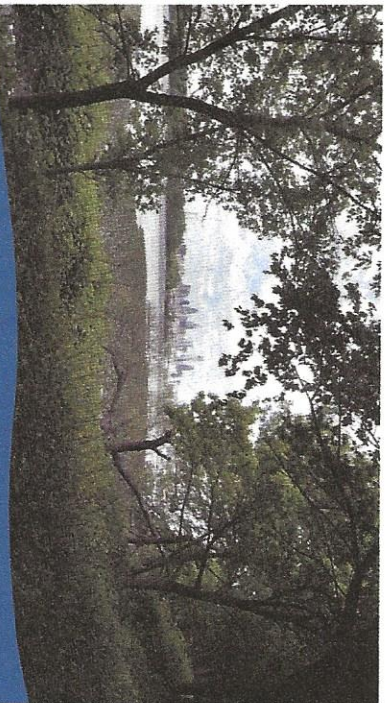
Located in Camden County, Petty's Island Preserve's 400 acres of wooded wetlands and 140 acres of tidal mudflats provide vital habitat for local wildlife.



TONY GADNER

This urban oasis provides breeding, foraging and resting habitat for an amazing array of wildlife. In addition to a pair of Bald eagles, hawks, falcons and waterfowl often visit the island and the mud flats. Songbirds and hawks migrate along the river corridor each May and October and find food and cover within the island's woods and wetlands. The island is also home to Snapping Turtles, Box Turtles, Red Fox, Green Frogs and Garter Snakes.

In 2009 New Jersey Natural Lands Trust (Trust) was granted a conservation easement by CITGO. This easement ensures that the island will be remediated, restored, and then preserved in a natural state in perpetuity. The easement also allows limited public access for educational programming and passive recreation which New Jersey Audubon has been contracted to provide.



nj.gov/dep/njnlk/index.htm

the New Jersey NATURAL LANDS TRUST - Preserving land in its natural state for enjoyment by the public and to protect natural diversity.

At this time Petty's Island is only accessible as part of a scheduled program. For more information or for a schedule of programs please visit:

<http://www.njaudubon.org/Go/Petty>
OR SCAN:



Photo by Carl Wild



NEW JERSEY
AUDUBON
www.njaudubon.org

Petty's Island Preserve

36th Street Causeway, Pennsauken, NJ
908.766.5787 ~ Email: kelly.wenzel@njaudubon.org

New Jersey Audubon is a member-supported, not-for-profit conservation organization. We achieve our mission through science-based wildlife research, environment-based education, stewardship and environmental advocacy. For membership information visit www.njaudubon.org or call (908) 204-8998.